

KATHY BONDEROVE

BUS: 604-926-6011

FAX: 604-926-9199

CEL: 604-657-2133

WEBSITE: www.kathybonderove.com

EMAIL: kathy@kathybonderove.com

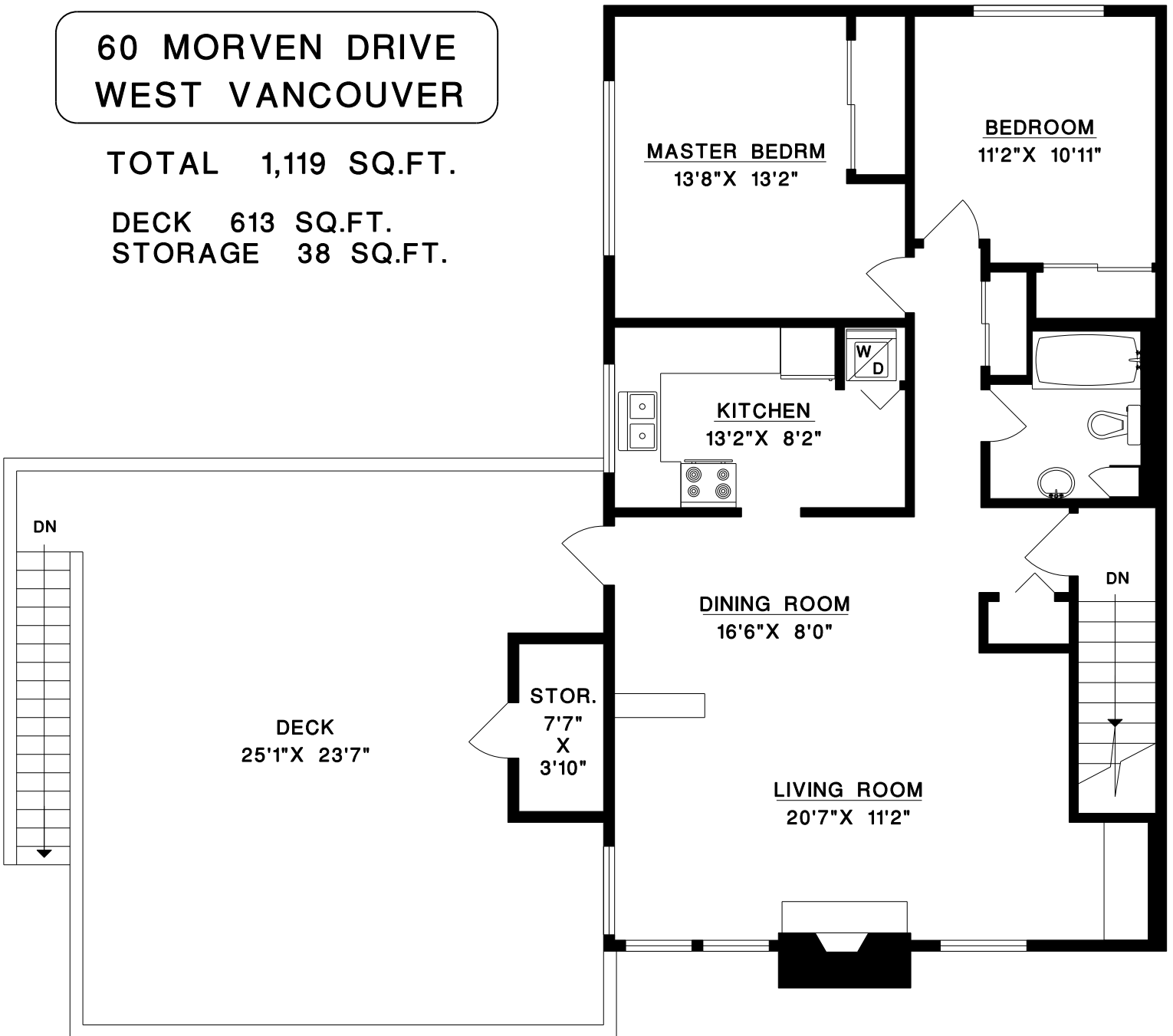


ROYAL LEPAGE NORTHSORE
2407 Marine Drive
WEST VANCOUVER, BC
V7V 1L3

**60 MORVEN DRIVE
WEST VANCOUVER**

TOTAL 1,119 SQ.FT.

**DECK 613 SQ.FT.
STORAGE 38 SQ.FT.**



FILE: 1059-55
DATE: FEB/10