

**KATHY BONDEROVE**

BUS: 604-926-6011

FAX: 604-926-9199

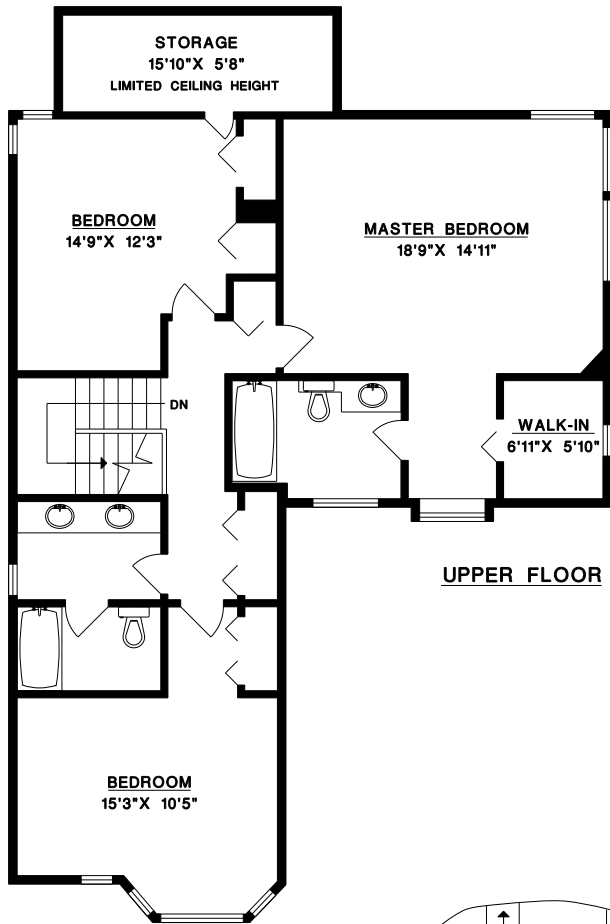
CEL: 604-657-2133

WEBSITE: [www.kathybonderove.com](http://www.kathybonderove.com)

EMAIL: [kathy@kathybonderove.com](mailto:kathy@kathybonderove.com)

**ROYAL LEPAGE**

ROYAL LEPAGE NORTHSORE  
2407 Marine Drive  
WEST VANCOUVER, BC  
V7V 1L3



**4005 ROSE CRESCENT  
WEST VANCOUVER**

MAIN FLOOR 1,261 SQ.FT.  
UPPER FLOOR 1,198 SQ.FT.  
LOWER FLOOR 772 SQ.FT.

TOTAL 3,231 SQ.FT.

GARAGE 591 SQ.FT.  
STORAGE 103 SQ.FT.  
DECK 264 SQ.FT.  
PATIO 271 SQ.FT.

